

PAMP SA

SWITZERLAND

LOCATION

PAMP SA is a leading international gold refiner and the world's largest manufacturer of minted bars. It has its headquarters in Castel San Pietro in south eastern Switzerland.

Gold refining, and the manufacturing of bars and other products, takes place in Castel San Pietro.

OWNERSHIP

PAMP SA is a subsidiary of MKS (Switzerland) SA, a private company. Its international headquarters is located in Geneva.

ACCREDITATION

- 1987 London Bullion Market Association (LBMA)
- 1989 CME Group - Market Contract: COMEX
- 1990 Tokyo Commodity Exchange (TOCOM)
- 2005 Dubai Multi Commodities Centre (DMCC)

Central Office of Precious Metal Control, Berne
Swiss Association of Manufacturers and Traders in Precious Metals

The gold bars of PAMP have been accepted as good delivery by the Swiss National bank since 1986.

In 2004, the London Bullion Market Association (LBMA) appointed PAMP SA as one of five Referees to the London Good Delivery system.

PAMP is also accredited to the LBMA for silver (since 1995), the London Platinum and Palladium Market (since 2003) and the Tokyo Commodity Exchange for silver and palladium (since 2007) and for platinum (since 2008).

BACKGROUND

PAMP SA, founded in 1977, was established as a subsidiary company of MKS (Switzerland) SA in 1981.

The name "PAMP" is a contraction of the words "Produits Artistiques Métaux Précieux".

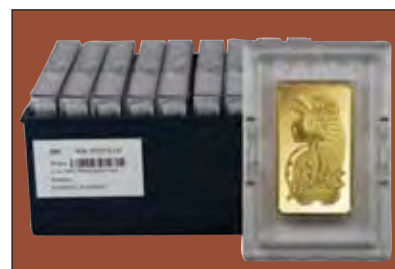
Until 1984, the company confined its operations to bar manufacturing at premises located in Via Emilio Bossi in Chiasso.

In 1984, the company was relocated to Castel San Pietro where a substantial new gold and silver refinery and manufacturing plant had been built.

PAMP is renowned for pioneering major international developments in the format and design of minted bars.



PAMP SA, a leading international gold refiner and bar manufacturer, was founded in 1977.



The company is the world's major manufacturer of minted gold bars.



Kilobars are manufactured to a fineness of 995, 999 or 999.9 for the international market.



The company was the first among accredited gold refiners to incorporate as standard practice a wide variety of optional designs on the reverse sides of its bars (since 1979), to produce pendant bars (since 1983) and bars in a variety of shapes (since 1985), to apply colourful three dimensional holograms as a decorative device (since 1990), to manufacture 1 oz and 1/2 oz bullion watches (since 1994), to issue an extensive range of round and oval minted bars (since 1995), to issue higher value added "talisman" bars (2006), a series of fashionable "icOns" bars (2009) and a series of "Elements" bars in 2012.

In addition to Switzerland, the company has offices in 11 countries: established in Dubai (1996), Thailand (1996), Malaysia (1996), Australia (1998), USA and China (2002), Vietnam, Netherlands and India (2008), Singapore (2009) and Turkey (2010).

Apart from gold, the company refines silver, platinum, palladium, rhodium and ruthenium, producing bars and other products for the silver and platinum group metal industries.

Number of employees: 220

GOLD SERVICES

PAMP SA focuses on:

- (1) Homogenization
- (2) Recovery and refining
- (3) Casting/manufacture of 'Good Delivery' bars or bullion bars (100-grams or greater)
- (4) Minting services

GOLD REFINING AND RECYCLING OF SCRAP

The company normally accepts the following gold-bearing materials for refining up to 999.9, and to 999.99 purity if required:

- Semi-refined bullion
- Mine doré: predominantly gold
- Mine doré: predominantly silver
- Old jewellery
- Jewellery manufacturers scrap
- Dental scrap
- Old coins and medals
- Slag and other refining scrap

Gold refining methods include wet chemical chlorination (aqua regia), electrolysis and wet chemical parting.

Annual gold refining capacity is in excess of 450 tonnes.

GOLD BARS

An indicative standard range of 11 cast bars, and 46 minted bars in a variety of shapes.

Cast: 400 oz, 100 oz, 100 g – 1000 g, 10 tola, 1 – 10 tael
 Minted: 0.3 g – 1000 g, 1/10 oz – 10 oz, 1 and 5 tola, 1 tael

PAMP also manufactures an extensive range of customised bars for external entities. In recent years, it is renowned for having pioneered the manufacturing of minted bars in a variety of shapes (round, rectangular, oval and heart) for leading banks in India.



The refinery was established in Castel San Pietro in 1984.



Pouring molten gold



PAMP has manufactured London Good Delivery 400 oz bars since 1987.



TECHNICAL DESCRIPTION

Weight	Type	Fineness	Shape	Dimensions mm	First Issued	Serial Number System
400 oz	Cast	999.9	Rectangular	250 x 90 x 40 225 x 58 (base)	1984	Letter Plus 8 numbers
100 oz	Cast	999.9	Rectangular	127.5 x 57.5 x 25 122.5 x 52.5 (base)	1988	Letter/6 numbers
1000 g	Cast	995, 999, 999.9	Rectangular	116 x 51 x 8.67	1984	Letter/6 numbers
500 g	Cast	999.9	Rectangular	90 x 40 x 7.3	1985	Letter/6 numbers
250 g	Cast	999.9	Rectangular	60 x 35 x 6.3	1985	Letter/6 numbers
100 g	Cast	999.9	Rectangular	44 x 26.5 x 4.5	1988	Letter/6 numbers
50 g	Cast	999.9	Rectangular	33 x 19 x 5	2008	Letter/6 numbers
10 tola	Cast	999, 999.9	Rectangular	47 x 27 x 5.01	1985	-
10 tael	Cast	999.9	Rectangular	90 x 40 x 5.5	1989	Letter/6 numbers
5 tael	Cast	999.9	Rectangular	60 x 35 x 4.7	1989	Letter/6 numbers
1 tael	Cast	999.9	Rectangular	27 x 16 x 5	1989	Letter/6 numbers
1000 g	Minted	999.9	Rectangular	118 x 52.5 x 8.4	2010	Letter/6 numbers
500 g	Minted	999.9	Rectangular	85 x 54 x 5.63	2010	Letter/6 numbers
250 g	Minted	999.9	Rectangular	60 x 35 x 6.20	2010	Letter/6 numbers
100 g	Minted	999.9	Rectangular	47 x 27 x 4.29	1979	Letter/ 6 numbers
50 g	Minted	999.9	Rectangular	47 x 27 x 2.13	1979	Letter/6 numbers
20 g	Minted	999.9	Rectangular	31 x 18 x 1.97	1979	Letter/6 numbers
10 g	Minted	999.9	Rectangular	25.5 x 15.5 x 1.38	1979	Letter/6 numbers
8 g	Minted	999.9	Rectangular	22.5 x 15.5 x 1.05	2005	Letter/6 numbers
5 g	Minted	999.9	Rectangular	23.3 x 14 x 0.83	1979	Letter/6 numbers
2.5 g	Minted	999.9	Rectangular	22.1 x 13.1 x 0.46	1981	Letter/6 numbers
1 g	Minted	999.9	Rectangular	14.5 x 8.6 x 0.43	1980	Letter/6 numbers
0.5 g	Minted	999.9	Rectangular	9.5 x 6 x 0.29	2007	Letter/6 numbers
0.3 g	Minted	999.9	Rectangular	9.5 x 6 x 0.17	2007	Letter/6 numbers
10 oz	Minted	999.9	Rectangular	60 x 35 x 8.3	2004	Letter/6 numbers
5 oz	Minted	999.9	Rectangular	60 x 35 x 3.79	2004	Letter/6 numbers
1 oz	Minted	999.9	Rectangular	41 x 24 x 1.70	1979	Letter/6 numbers
½ oz	Minted	999.9	Rectangular	31 x 18 x 1.52	1979	Letter/6 numbers
¼ oz	Minted	999.9	Rectangular	25.5 x 14.5 x 1.07	2008	Letter/6 numbers
5 tola	Minted	999, 999.9	Rectangular	47 x 27 x 2.48	1989	Letter/6 numbers
1 tola	Minted	999, 999.9	Rectangular	25.5 x 15.5 x 1.61	1983	Letter/6 numbers
1 tael	Minted	999.9	Rectangular	41 x 24 x 2.20	1989	Letter/6 numbers
50 g	Minted	999.9	Round	40 x 40 x 2.04	1995	Letter/6 numbers
20 g	Minted	999.9	Round	33 x 33 x 1.20	1995	Letter/6 numbers
20 g	Minted	999.9	Round	24 x 24 x 2.26	1995	Letter/6 numbers
10 g	Minted	999.9	Round	24 x 24 x 1.13	1995	Letter/6 numbers
10 g	Minted	999.9	Round	22 x 22 x 1.35	1995	Letter/6 numbers
7 g	Minted	999.9	Round	22 x 22 x 0.94	1995	Letter/6 numbers
5 g	Minted	999.9	Round	18 x 18 x 1.00	1995	Letter/6 numbers
5 g	Minted	999.9	Round	16 x 16 x 1.27	1995	Letter/6 numbers
2.5 g	Minted	999.9	Round	18 x 18 x 0.50	1995	Letter/6 numbers
2.5 g	Minted	999.9	Round	16 x 16 x 0.63	1995	Letter/6 numbers
2 g	Minted	999.9	Round	13.9 x 13.9 x 0.78	1995	Letter/6 numbers
1 oz	Minted	999.9	Round	33 x 33 x 2.15	1987	Letter/6 numbers
½ oz	Minted	999.9	Round	24 x 24 x 1.76	1990	Letter/6 numbers
¼ oz	Minted	999.9	Round	22 x 22 x 1.05	1990	Letter/6 numbers
1/10 oz	Minted	999.9	Round	18 x 18 x 0.63	1990	Letter/6 numbers



Weight	Type	Fineness	Shape	Dimensions mm	First Issued	Serial Number System
50 g	Minted	999.9	Oval	45 x 30 x 2.46	1995	Letter/6 numbers
20 g	Minted	999.9	Oval	45 x 30 x 0.98	1995	Letter/6 numbers
10 g	Minted	999.9	Oval	26.8 x 16.5 x 1.46	1995	Letter/6 numbers
8 g	Minted	999.9	Oval	26.8 x 16.5 x 1.16	1995	Letter/6 numbers
5 g	Minted	999.9	Oval	22.5 x 14 x 1.035	1995	Letter/6 numbers
2.5 g	Minted	999.9	Oval	22.5 x 14 x 0.515	1995	Letter/6 numbers
1 g	Minted	999.9	Oval	14.5 x 9 x 0.51	1995	Letter/6 numbers
1 oz	Minted	999.9	Oval	45 x 30 x 1.53	1990	Letter/6 numbers
1/2 oz	Minted	999.9	Oval	45 x 30 x 0.765	1990	Letter/6 numbers
1/4 oz	Minted	999.9	Oval	26.8 x 16.5 x 1.13	1990	Letter/6 numbers

Source: PAMP SA

Serial numbering systems

400 oz. Letter plus 8 numbers. The serial number comprises 4 different codes. 1st code is a letter, which indicates the year the bar was made. 2nd code is a 4-digit number, which indicates the number assigned to the fusion (melting) process of a specific day. 3rd code is a 2-digit number, which indicates the progressive number assigned to each fusion cycle progressed during the day noted by the 2nd code. 4th code is a 2-digit number, which indicates the progressive number assigned to each bar. An example: A 01230212.

A serial numbering system was applied as standard practice only on 400 oz and 100 oz bars from 1984 until 2012. Serial numbers on other bar weights were only applied on request.

Since 2012, almost all smaller cast and minted bars are now stamped with a letter and serial number.

HISTORY OF GOLD BAR MANUFACTURE

PAMP SA, in its early years, manufactured minted bars only.

In 1979, 7 rectangular minted bars were launched: 100 g, 50 g, 20 g, 10 g, 5 g, 1 oz, 1/2 oz. The range was extended with the introduction of 1 g (1980), 2.5 g (1981), 1 tola (1983), 5 tola and 1 tael (1989), chi-denominated bars for Vietnam (1994), and 5 oz and 10 oz (2004).

In 1984, 400 oz and 1000 g cast bars were issued, following the opening of the refinery at Castel San Pietro. The cast bar range was increased with the issue of 500 g, 250 g, 10 tola (1985), 100 oz, 100 g (1988), 10 tael and 5 tael bars (1989). The company's first cast bar, the 10 tola, had been introduced in 1983.

In 1990, the company was the first, among accredited refiners, to issue oval minted bars: 1 oz, 1/2 oz and 1/4 oz. In 1995, 7 gram-denominated weights were also issued, ranging from 1 g to 50 g.

The company's first round minted bar was issued as a 1 oz (1987), followed by others: 1/2, 1/4 and 1/10 oz bars (1990), and 12 gram-denominated bars, ranging from 2 g to 50 g (1995).

In 1995, the company was the first, among accredited refiners, to issue a range of oval minted bars: in 7 weights, ranging from 1 g to 50 g.

In 2010, 1000 g, 500 g and 250 g minted bars were issued.



The company manufactures a standard range of 46 rectangular, round and oval minted bars.



Minted bars are protected by CertiPAMP packaging.



In 2011, “The Lunar Calendar Series” was launched to commemorate the 12-year lunar, starting with “Year of the Dragon” bars for 2012. Range: 100 g, 5 g and 1 oz.

While standard rectangular bars have been manufactured since 1979, innovative pendant bars in a variety of shapes that incorporate a hanger have been issued: oval, rectangular (since 1984), lozenge (since 1985), colonna (since 1986), heart (since 1994).

In recent years, many other innovative bars, with a capacity to be worn as pendants, have been launched: “Talisman” bars (2006) in a variety of shapes; “ic0ns” bars (since 2009) with stylish designs appealing directly to fashion conscious consumers; “Elements” bars (since 2010); and “Anim-Mates” bars (in 2014).

A decorative design has appeared on the reverse side of all minted bars since 1979 when the Roman Goddess of Fortune, the best known of the company’s designs, was first used. Since that time, a portfolio of more than 50 optional designs have been developed, ranging from flowers, birds and animals to Zodiac signs, Hindu Gods and the Buddha.

Multi-coloured hologram designs, as an optional decorative feature, have been applied to gold bars, particularly pendant bars, since 1990.

The original official stamp, slightly modified in 1982, was adopted in 1979, the certification mark in 1980.

TRADE COMMUNICATION

Enquiries by **gold dealers** should be directed to MKS (Switzerland) SA:

MKS (Switzerland) SA
 Promenade St-Antoine 10
 PO Box 3470
 1211 Geneva 3
 Switzerland

Tel: +41-22-818 5100
 Fax: +41-22-810 1388
 Email: info@mks.com

Website: www.mks.ch

Enquiries by **industrial customers** should be directed to PAMP SA:

PAMP SA
 6874 Castel San Pietro
 Switzerland

Tel: 41-91-6950 450
 Fax: 41-91-6950 451
 Email: info@pamp.com

Website: www.pamp.ch



Fortuna

The renowned Fortuna, Rose and Liberty designs are often applied to the reverse side of minted bars.



Rose



Liberty



EXAMPLES OF CAST BARS



1000 g



Certificates are issued for all bars weighing 1000 g and less.



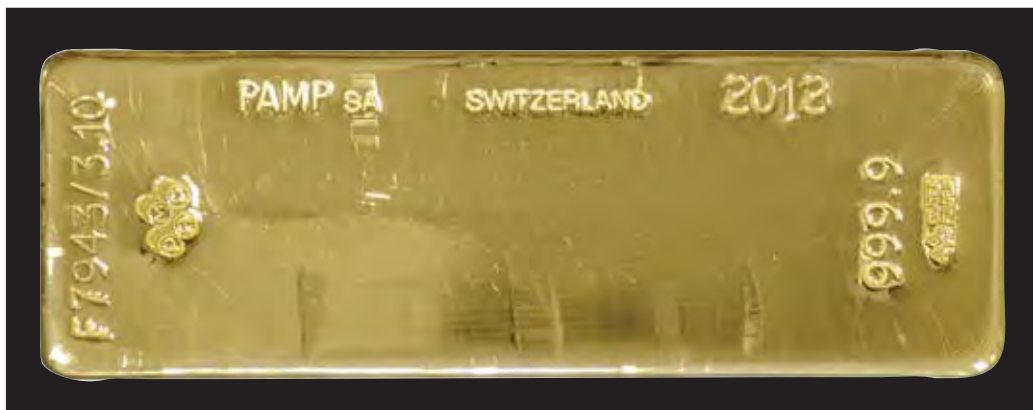
100 g



10 tola



1 tael



London Good Delivery 400 oz bar.

In 2004 the London Bullion Market Association (LBMA) appointed PAMP SA as one of five Referees to the London Good Delivery system.



EXAMPLES OF MINTED BARS



1000 g



100 g



20 g



50 g



1 oz



10 g

Round bars have been manufactured since 1990.



5 g

Oval bars have been manufactured since 1995.



Obverse



Reverse

Hologram bars have been manufactured since 1990.



STANDARD PENDANT GOLD BARS

PAMP is the world's largest manufacturer of minted pendant bars. The company has issued more than 50 tonnes of these innovative bars worldwide since their launch in the Middle East in 1984.

Weight	Type	Fineness	Shape	Dimensions mm	First Issued
50 g	Minted	999.9	Rectangular	51 x 27 x 2.07	1984
20 g	Minted	999.9	Rectangular	37 x 18 x 1.85	1984
10 g	Minted	999.9	Rectangular	28.5 x 15.5 x 1.32	1984
5 g	Minted	999.9	Rectangular	28.5 x 15.5 x 0.66	1984
2.5 g	Minted	999.9	Rectangular	26.7 x 14 x 0.385	1984
1 oz	Minted	999.9	Rectangular	45 x 24 x 1.68	1984
1/2 oz	Minted	999.9	Rectangular	37 x 18 x 1.45	1984
1/4 oz	Minted	999.9	Rectangular	28.5 x 15.5 x 1.04	1984
50 g	Minted	999.9	Oval	50 x 35 x 2.375	1984
20 g	Minted	999.9	Oval	50 x 35 x 0.945	1984
20 g	Minted	999.9	Oval	39 x 20 x 1.83	1984
10 g	Minted	999.9	Oval	31 x 17 x 1.85	1984
10 g	Minted	999.9	Oval	39 x 20 x 0.91	1984
5 g	Minted	999.9	Oval	26 x 14 x 0.98	1984
2.5 g	Minted	999.9	Oval	26 x 14 x 0.49	1984
1 g	Minted	999.9	Oval	17 x 9 x 0.47	1984
1 oz	Minted	999.9	Oval	50 x 35 x 1.47	1984
1/2 oz	Minted	999.9	Oval	50 x 35 x 0.735	1984
1/4 oz	Minted	999.9	Oval	31 x 17 x 1.095	1984
50 g	Minted	999.9	Lozenge	50 x 32 x 3.11	1985
20 g	Minted	999.9	Lozenge	50 x 32 x 1.24	1985
10 g	Minted	999.9	Lozenge	38 x 24 x 1.06	1985
5 g	Minted	999.9	Lozenge	31 x 18 x 0.83	1985
2.5 g	Minted	999.9	Lozenge	31 x 18 x 0.42	1985
1 g	Minted	999.9	Lozenge	17 x 11 x 0.68	1985
1 oz	Minted	999.9	Lozenge	50 x 32 x 1.93	1985
1/2 oz	Minted	999.9	Lozenge	50 x 32 x 0.965	1985
20 g	Minted	999.9	Colonna	47 x 32 x 1.11	1986
10 g	Minted	999.9	Colonna	37 x 25 x 0.94	1986
5 g	Minted	999.9	Colonna	27.5 x 18.5 x 0.82	1986
1 oz	Minted	999.9	Colonna	47 x 32 x 1.735	1986
1/2 oz	Minted	999.9	Colonna	47 x 32 x 0.86	1986
2 g	Minted	999.9	Heart I	21 x 20 x 0.37	1995
2.5 g	Minted	999.9	Heart I	21 x 20 x 0.47	1995
5 g	Minted	999.9	Heart I	23 x 22 x 0.75	1995
10 g	Minted	999.9	Heart I	26 x 27 x 1.095	1995
2.5 g	Minted	999.9	Heart II	22 x 21 x 0.45	1999
5 g	Minted	999.9	Heart II	22 x 21 x 0.90	1999
10 g	Minted	999.9	Heart II	24 x 26 x 1.30	1999
5 g	Minted	999.9	Double-Pendant	31.5 x 28 x 2.01	1996

Source : PAMP SA



EXAMPLES OF STANDARD PENDANT BARS



Lozenge



Oval



Colonna



Obverse
Heart



Double-pendant



Reverse
Heart

GOLD “icOns” BARS – SERIES

PAMP is the first, among accredited refiners to manufacture minted gold bars that incorporate fashion and pop culture-derived motifs on their reverse sides. The 1st edition, launched in 2009, illustrates a variety of skins: cobra, crocodile, stingray, leopard and zebra. The 2nd edition, launched in 2011, illustrates three famous styles of lace that originated in the French cities of Calais, Chantilly and Valenciennes.

Weight	Type	Fineness	Shape	Dimensions mm	First Issued
20 g	Minted	999.9	Rectangular	41 x 24	2009
10 g	Minted	999.9	Rectangular	31 x 18	2009
5 g	Minted	999.9	Rectangular	23.3 x 14	2009

Source: PAMP SA



The “icOns” series was launched in 2009.

GOLD “ELEMENTS” BARS – SERIES

A range of stylish “Bloom” gold bars illustrates a variety of flowers: Water Lily, Orchid, Iris, Rose and Peony. The bars, which weigh 1/5 oz, have an elongated, rectangular shape, similar to the ancient Egyptian “cartouche”. They were launched in 2010.

Weight	Type	Fineness	Shape	Dimensions mm	First Issued
1/5 oz	Minted	999.9	Rectangular	13.00 x 30.00	2010

Source: PAMP SA



The “Elements” series was launched in 2010.



LUNAR CALENDAR GOLD BARS - SERIES

The Lunar Calendar Series started with “Year of the Dragon” bars for 2012, followed by the “Year of the Snake” in 2013. The 12 animals in the 12-year lunar cycle: Rat, Ox, Tiger, Rabbit, Dragon, Snake, Horse, Goat, Monkey, Rooster, Dog, Pig.

Weight	Type	Fineness	Shape	Dimensions mm	First Issued*
100 g	Minted	999.9	Rectangular	27.00 x 47.00	2011
1 oz	Minted	999.9	Rectangular	24.00 x 41.00	2011
5 g	Minted	999.9	Rectangular	14.00 x 23.30	2011

Source: PAMP SA

TALISMAN GOLD BARS

Known as “FORS talismans”, these innovative minted bars were launched in Japan in 2006. Each of the 6 different shapes represents a symbol of good fortune. An optional message of peace, love, joy, health or prosperity is inscribed on the bars in 9 languages: English, French, Italian, Spanish, German, Arabic, Hebrew, Russian and Chinese.

Weight	Type	Fineness	Name	Shape	Dimensions mm	First Issued
15 g	Minted	750	lcône	Oval	41 x 15	2006
6.5 g	Minted	750	Éternel	Rectangular	45 x 5.40	2006
4 g	Minted	750	Universe	Oval	26 x 10.50	2006
2 g	Minted	750	Plenty	Round	13 x 13	2006
4 g	Minted	750	Flame of Love	Heart	21 x 19.8	2006
2.4 g	Minted	750	Wave of Emotion	Heart	14.40 x 15	2006

Source: PAMP SA



Year of the Dragon

The Lunar Calendar Series was launched in 2012.



Éternel

The Talisman bar range was launched in 2006.



ANIM-MATES COLLECTION

The Anim-Mates Collection depicts three endearing animal characters: Bunny-Luv, Kitty-KDO and Brainy-Bear. The minted pendant bars, in proof-like quality, are also known as “Precious Squared” in recognition of their square shape. They were launched in 2014.

Weight	Type	Fineness	Shape	Dimensions mm	First Issued
10 g	Minted	999.9	Square	20 x 20	2014
5 g	Minted	999.9	Square	16 x 16	2014

Source: PAMP SA



Bunny-Luv



Kitty-KDO



Brainy-Bear

The Anim-Mates Collection was launched in 2014.

MULTIGRAM BULLION SETS

Multigram bullion sets, containing 25 x 1 g and 12 x 1 g minted gold bars, were launched in 2013. The bars are held in interconnecting CertiPAMP units that can be snapped off from the set as required. The sets assist those investors who prefer to own part of their gold holding in small 1 g units, as well as those who wish to use them as an attractive gold investment gift for family and friends. They were launched in 2013.

Weight	Type	Fineness	Shape	Dimensions mm	First Issued
1 g	Minted	999.9	Rectangular	9.5 x 6 x 1.1	2013

Source: PAMP SA



Multigram Bullion Sets were launched in 2013.



OFFICIAL STAMPS



On 400 oz and other bars issued under the name of PAMP SA, since 1982.



On rectangular tola bars only, since 1983.



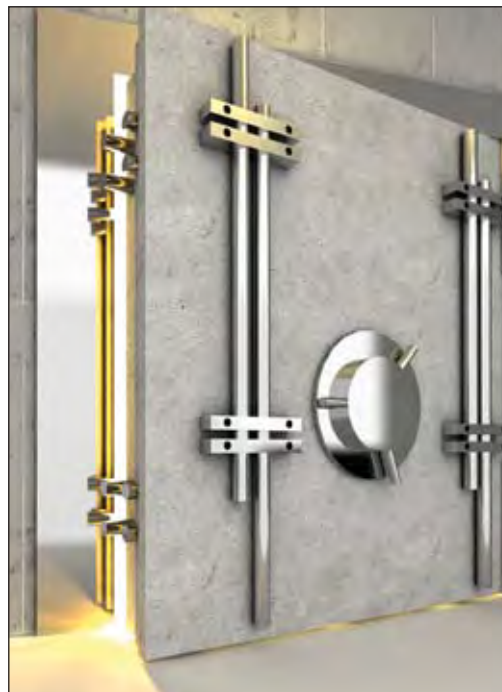
An historical stamp used on all bars between 1978 and 1982, but can appear on minted bars.

CERTIFICATION MARK



On all bars issued under the name of PAMP SA, since 1980.

PAMP has its own in-house design workshop and manufactures its own master tools and dies.



PAMP offers allocated and unallocated gold storage facilities in Switzerland, New York and New Delhi.





PAMP manufactures London Good Delivery platinum and palladium bars (since 2003) and silver bars (since 1995), as well as an extensive range of smaller bars.



MMTC-PAMP India Pvt Ltd, which is associated with PAMP SA (Switzerland), opened a new gold refining and bar manufacturing plant near New Delhi in 2012.

The company is a private joint venture between MKS Holding BV, MMTC Limited (India) and an MMTC employees entity.



Refer to disclaimer on website: www.goldbarsworldwide.com

© Grendon International Research Pty Ltd 2014. All rights reserved.

